

LEXINGTON FIRE DEPARTMENT

9055 S. Highway Drive ~ (763) 784-1604

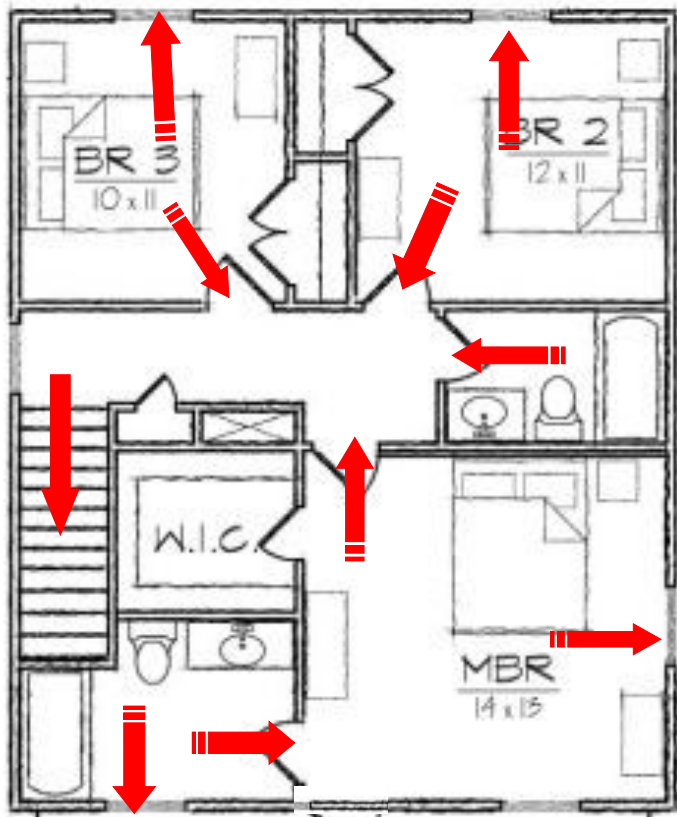


Home Fire Escape Plan Instructions

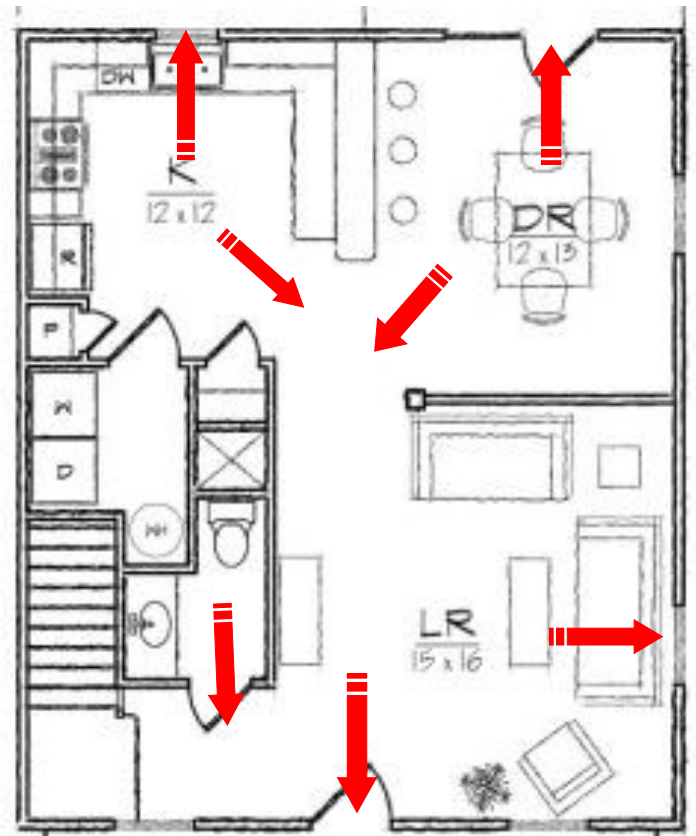
- ◇ Draw a map of your home, show all doors and windows.
- ◇ Visit each room. Find two ways out.
- ◇ All windows and doors should open easily, you should be able to use them to get outside.
- ◇ Make sure your home has smoke alarms. Push the test button to make sure each one is working.
- ◇ Pick a meeting place outside in the front of the home. Everyone should meet there.
- ◇ Make sure your house or building number can be seen from the street.
- ◇ Talk about your plan with everyone in your home.
- ◇ Practice your home fire drill!
- ◇ Make your own home fire escape plan using the grid on page 2.

It's a good idea to keep flashlights in every room as well as a whistle to help rescuers locate you if you can't get out

Sample Escape Plan



Second Floor



First Floor

October is Fire Prevention Month



This image shows a full page of blank graph paper. The background is a very light gray, and it is covered by a precise grid of thin, light blue horizontal and vertical lines. These lines intersect to form a series of small, identical squares across the entire surface of the page. There are no margins, text, or other markings present.